



**Economic  
Opportunity  
Program, Inc.**

*Strengthening the fabric of our community*

# **2022-2024 COMMUNITY NEEDS ASSESSMENT ECONOMIC OPPORTUNITY PROGRAM, INC.**

**ECONOMIC OPPORTUNITY PROGRAM, INC.  
OF CHEMUNG AND SCHUYLER COUNTIES**

**650 Baldwin Street • Elmira, New York 14901**

**607-734-6174 (Ph.) • 607-733-8126 (F.)**

**[www.cseop.org](http://www.cseop.org) • [www.facebook.com/ElmiraEconomicOpportunityProgramInc](https://www.facebook.com/ElmiraEconomicOpportunityProgramInc)**

# Community Needs Assessment-2022-2024

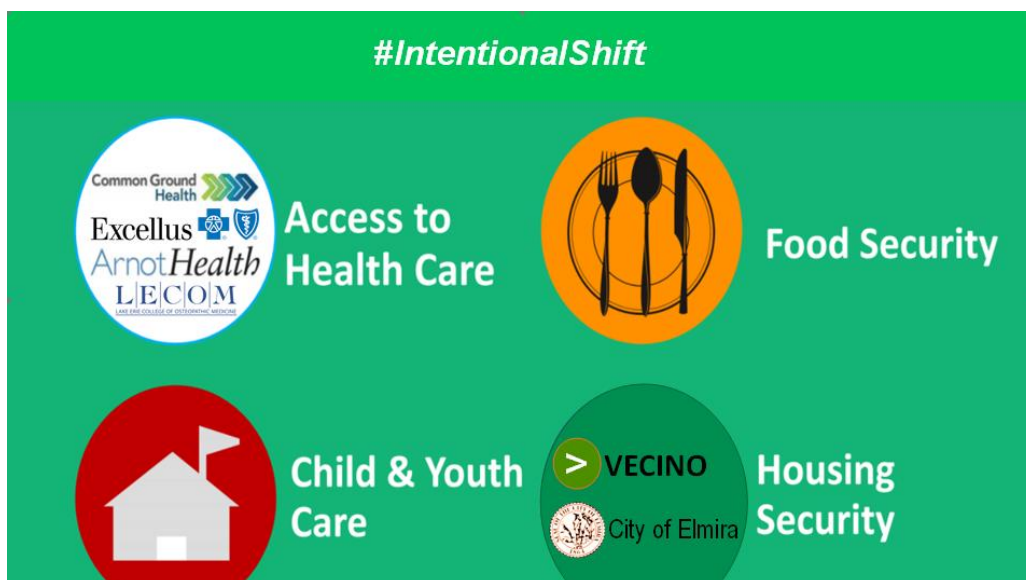
## Table of Contents

	<u>Page</u>
Who We Serve—Our Area .....	5
Community Conditions .....	10
<i>Literacy levels, infant and child mortality, prevalent health issues, nutrition trends, housing conditions, community partner feedback</i>	
Priority Issues and Community Assessment Update .....	19
Summary .....	20
<i>Review of community impact, future areas of focus</i>	
Appendices: .....	37
<i>Agency Survey Process, Survey Type Grid</i>	
<i>Scorecard Outcome Results</i>	
<i>Marketing Flyers for Community Health Events</i>	
<i>Access to Health Care Community/Public Health Partnerships</i>	
<i>Food Security Partnerships</i>	

## Economic Opportunity Program, Inc. Overview

The Economic Opportunity Program, Inc. (EOP), is the Community Action Agency and one of the oldest private human services organizations serving Chemung and Schuyler Counties. The agency helps thousands of residents in the Southern Tier region of New York State. EOP envisions a future where all people in our community will live with dignity and will have the opportunity and ability to live economically productive and satisfying lives (Annual Report). To achieve this vision, EOP's mission is to provide services that create positive change in individuals, families, and our community; and encourages and facilitates participation by all people who can help make our vision a reality (EOP 2022-2023 Annual Report). At the agency's heart, the core competencies of EOP's work in the community are childcare, youth care, family development, and community and economic development to promote self-sufficiency. These core competencies are rooted in a strong set of values including people, family, diversity, active community participation, a living wage, excellence in services, effective and efficient use of resources, integrity, collaborative partnerships, competent and caring staff, recognition of staff, and human resource development (EOP 2022-2023 Annual Report). EOP demonstrates its commitment to the community as the values of the organization shine through the programs and services offered.

There are **4 Key Strategic areas of Focus: Access to Health Care, Child & Youth Care, Food Security** and **Housing Security**. Programs offered to address the strategic areas include: Anti-Displacement & Supportive Services, B25 School Readiness Head Start, Community Food for Jobs, Summer Feeding, Centers for Excellence, Center of Excellence(COE), Literacy Volunteers, Family Support Services, the Ernie Davis Community Center, Music Consortium, the Energy Services Bureau, and the Libertad-Elmira Veterans Family Program.



The Economic Opportunity Program has had a strong history of relationships with low-income families in its target community. The organization was incorporated in 1965 to administer the Federal Economic Opportunity Act of 1964 whose corporate purpose is *“to eliminate poverty in the midst of plenty in this Nation by opening to everyone the opportunity for education and training, the opportunity to work and the opportunity to live in decency and dignity.”*

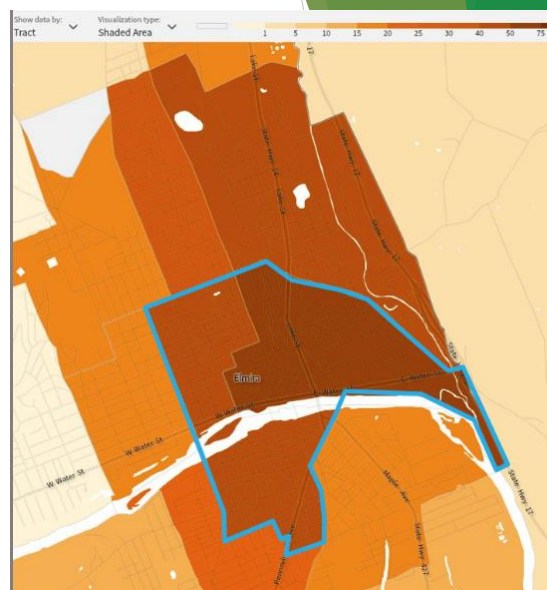
EOP was designated by the legislatures of both Chemung and Schuylar Counties to be the anti-poverty Community Action Agency serving both counties. Since its incorporation in 1965, EOP has had considerable experience in the financial management of community initiatives through its partnerships at the federal and state levels, contracts and grants. Currently, there are 79 nonprofits in the Southern Tier of New York holding 496 contracts totaling \$392 million serving 640, 036. The EOP 2022-2023 budget of approximately \$8.3 million (including in-kind) was supported by thirty different funding sources through over one hundred contracts. Through its efforts with a wide variety of funding and programmatic sources, the Economic Opportunity Program, Inc. programs are intentionally shifting to remain relevant and agile to expand its position to successfully administer grants to those in need.

To assess and analyze the needs of the community, EOP collaborated in other Community Assessments meetings. During 2022-present, the organization partnered with the **Chemung County Health Department Assessment (June 2022-2023)**, and the **Chemung County Planning Department (2024)**. EOP strategically participates and co-facilitates in various community assessments by partnering with other organizations to strengthen community, offer input in relevant areas of programming, support outreach, gather input on the greatest areas of need and influence outcomes addressing the greatest needs of the community.

# WHO WE SERVE

## OUR AREA

- **40%** of Elmira's families live below the poverty level
- Nearly **90%** are low income families living under severe economic stress
- **45%** of families living in poverty have children under 18



Families: Income in 2020 Below Poverty Level

More specifically, goals established from the **Empire State Poverty Reduction Initiative (ESPRI)** continue to be implemented by the agency. Three areas of common themes and focus are: the facility of the **after-school program, employment**, and attending **college due to the lack of jobs or living wages**. The feedback regarding EOP's services is positive with a need for expanded services: *childcare, career readiness, and health, wellness, housing, and hunger.*

## ESPRI Goals

**Goal: Break the cycle of economic hardship, increase social mobility and revitalize Elmira's target neighborhoods**

*Increase accessibility and effectiveness of wraparound services using a locally based navigator model, community ambassadors and enhanced childcare*

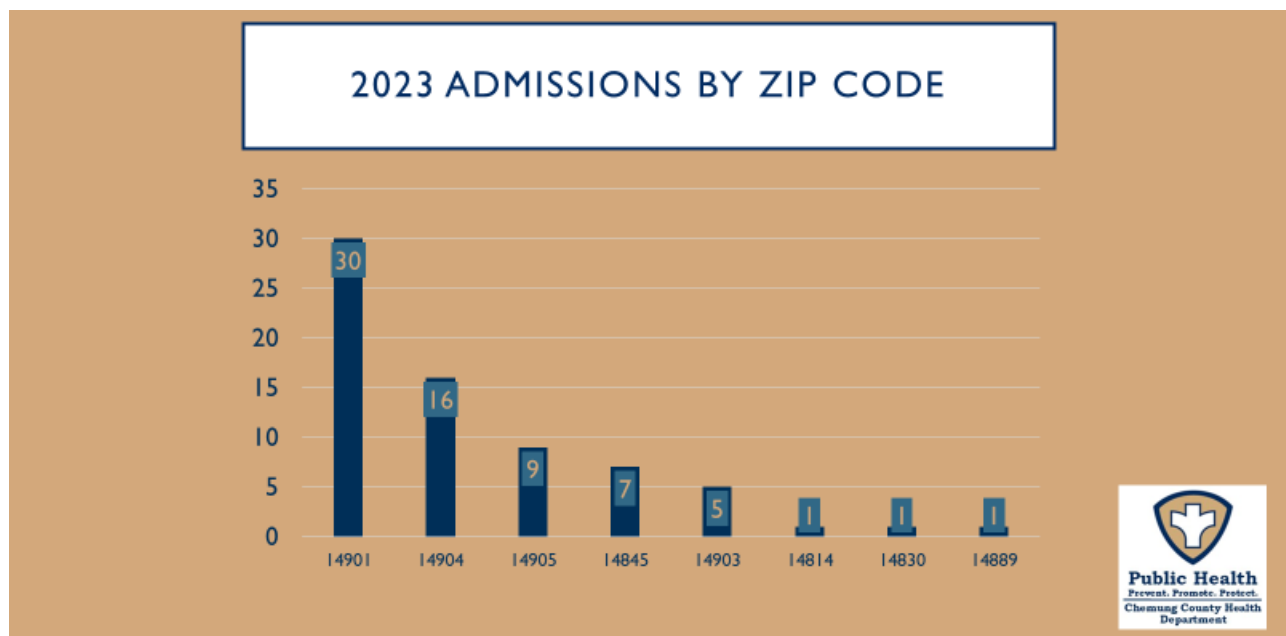
*Revitalize the vibrancy of target neighborhoods, while increasing access to affordable rental housing and opportunities for homeownership and mixed income blocks*


*Establish pathways to long-term and productive employment through coordinated engagement of secondary education, job training and personalized family support services*

EOP continues to respond to post-COVID-19 needs and intentionally shifted to address food insecurity and housing security. More than **42,000 meals @EOPCurbside**-breakfast and dinner; a **MEALS** (mindful eating active lifestyles) program; and increased supportive care for our homeless veterans @Libertad-Elmira. (Appendix II) resulted.

The community assessment process yielded opportunities for expanded innovative education, social, and business partnerships garnered with Arnot Health, Chemung County Public Health, EOP, Inc. and LECOM-Lake Erie College of Osteopathic Medicine to form the **ACCEL Clinic** to address the evolving health access and equity needs of the community. Specifically, environmental and social costs are higher in poor neighborhoods. For example, Black families are 70% more likely than other populations to live in substandard housing with black children being three times as likely to have high levels of lead in their blood, impacting future cognitive development, and leading to increased violence in adulthood (Economist (2020). Staying Apart, Washington, DC).

A Rapid Health Impact Assessment conducted in Chemung County (Common Ground Health, 2018) supported the opening in May 2022 of the ACCEL Clinic underwritten by Excellus BCBS to provide weekly free health screenings—lead, blood pressure tests, and nutritional screening education services and other quarterly health clinics have been hosted to address specific community health needs (Appendices III & IV). Since May 2022, weekly ACCEL Clinic preventative health screenings have been hosted at EOP, Inc., facilitating more than 900 blood pressure and lead screenings provided to the community. The lead levels are highest for admissions in the Census Tract 7 (14901), which hosts the highest levels of poverty in the City of Elmira-Chemung County.





**Economic Opportunity Program, Inc.**  
*Strengthening the fabric of our community*

**Main Office:**  
100 Southern Boulevard  
Elmira, NY 14902  
Phone (607) 734-6176  
Fax (607) 733-4136

**Schuyler County Office:**  
203 Tenth Street  
Watkins, Glens, NY 14891  
Phone (607) 638-3360  
Fax (607) 535-8808

[www.eopinc.org](http://www.eopinc.org)  
[www.facebook.com/EconomicOpportunityProgram](http://www.facebook.com/EconomicOpportunityProgram)

**CONTACT:**  
Asha Lewis, Chief Development Officer  
Phone: 607-734-6174, x232  
Email: [alewis@eopinc.org](mailto:alewis@eopinc.org)

**FOR IMMEDIATE RELEASE**  
November 2, 2023

**Services:**

- Brief to Free School Readiness Program
- Center of Excellence (New City Program)
- Community Portal for Job Program & Skills
- Energy Services/Buses
- Evacuation Community Center
- Family Support Services
- Laboratory Violence and Family Program
- Laboratory Violence of Chertsey & Schuyler Counties

**ACCCEL Clinic named recipient of Excellus BlueCross BlueShield 2023 Health Equity Innovation Award**  
*\$30,000 in funding awarded to EOP, Inc. to support the ACCCEL Clinic*

[Elmira, N.Y.] – The ACCCEL Clinic at the Economic Opportunity Program, Inc. (EOP Inc.) has been recognized by Excellus BlueCross BlueShield for its commitment to addressing health disparities and improving health equity and named a 2023 Health Equity Innovation Award recipient. The awards program aims to provide financial support to community programs that address racial and ethnic health disparities across Excellus BCBS's upstate New York service area. EOP Inc. was awarded \$30,000 in funding to support the ACCCEL Clinic.

The acronym ACCCEL stands for a collaborative partnership between Amherst Health, Schuyler County Health Department, the Economic Opportunity Program, and LECOM. The ACCCEL Clinic is located at 650 Hallock St. in Elmira, NY. The ACCCEL Clinic's purpose is to provide cost-free and easy access to medical services for children and their families. The ACCCEL Clinic offers weekly free lead screenings in response to Chertsey County's historically high lead levels; free blood pressure tests for children and adults; and nutritional education services provided by a collaboration with SNAP-Ed's Fruit & Vegetable Prescription Program. The funding allows the ACCCEL Clinic to reach more of the 11,700 people living in poverty in Chertsey County, improve the health outcome of Chertsey County, and reduce health disparities for those that need it most.

"The ACCCEL Clinic funding underwritten by Excellus BCBS supports a vital community health partnership between agencies which all have a common goal – to address the social determinants of health that Chertsey County is facing," said Andrea Ogimben, CEO, Economic Opportunity Program, Inc.

EOP Inc. is one of 20 nonprofit, 501(c)(3) organizations from across Excellus BCBS's upstate New York service area – including the Rochester, Central New York, Utica/Northern County, and Southern Tier regions – recognized as part of this year's Health Equity Innovation Awards.





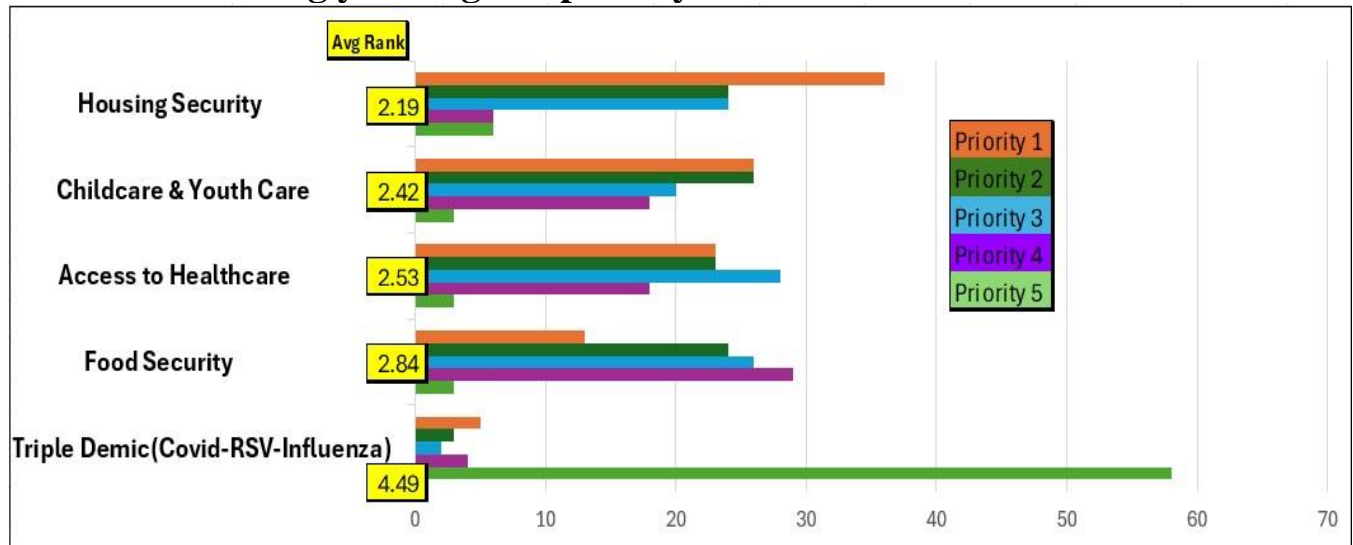
Economic Opportunity Program, Inc. of Chertsey and Schuyler Counties: a Community Action Agency



## 2024 EOP Top 3 Priorities Poll – Final Results

	Viewed	Started	Completed	Completion Rate	Drop-Outs (After Starting)	Average Time to Complete Survey
Total	1,016	105	105	100%	0	1 minute

**Q1. Thank you for participating in our survey to rank the Top 3 Priorities for 2024. With 1 being your highest priority.**



Overall, EOP plans to continue to host curbside food giveaways and ongoing health clinics in October 2024 and 2025 with LECOM and Arnot Health as a viable response to issues that impact the social determinants of health needs.

**Free SKIN CANCER SCREENING CLINIC**

Economic Opportunity Program **ACCEL Clinic** in collaboration with LECOM Elmira & Arnot Health partners host:

**Thursday, Oct 3rd 2024 5-7pm**

Focused skin exams conducted by **medical students** under the supervision of medical professionals.

Also offering education, blood pressure readings & lead testing.

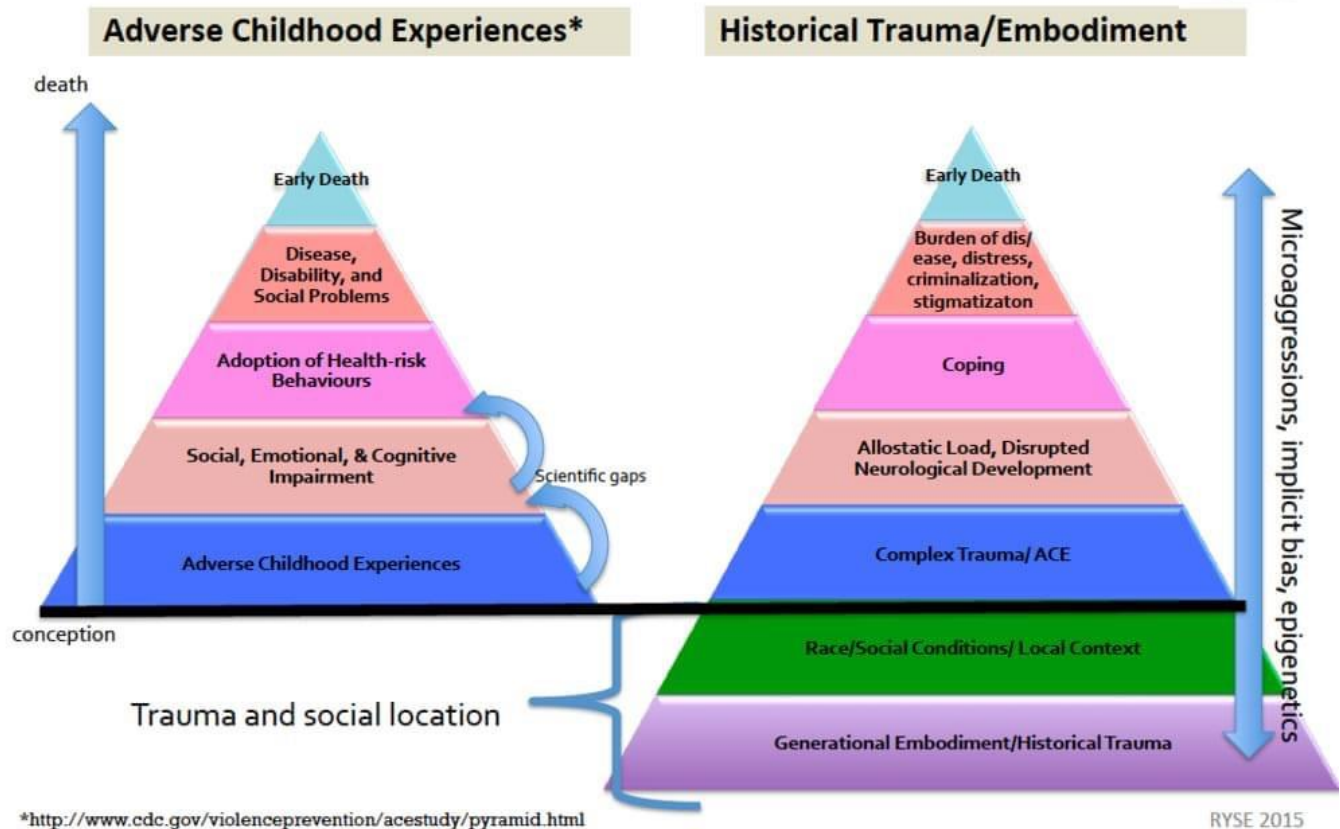
Please scan the QR code and fill out the survey if you are interested.

Questions? (607) 734-6174

Economic Opportunity Program, Inc. Arnot LECOM



# Trauma and Social Location



In order to meet the needs of the community, feedback from staff is crucial and valued. EOP engages and meets monthly through virtual platforms to address employee needs and expanded an interactive format, **Soul Talks**. An Employee Wellness Committee meets, solicits staff feedback, and provides input on activities and needs of staff. EOP continues to maintain an open-door policy in which staff may communicate through a variety of methods, utilizing Zoom chat boxes and small group training and discussions. To better equip the staff, training and development courses with the following topics were attended by supervisors and staff: **Managing After Covid-19**, **Trauma Informed Care**, and **Mental Health Toolkit**.

## Community Conditions

### *Geographic Location*

Chemung County is located on the New York and Pennsylvania border and is considered to be a part of the Southern Tier and Finger Lakes regions. According to the 2022 census estimate, Chemung County's population is 81,426. The most populated area for residences is in the City of Elmira. The breakdown by towns and villages within Chemung County is shown in Table 1.

### *Income*

The median household income between 2020-2021 in Chemung County is \$58,175 (Chemung County Quick Facts). In comparison with the median household income for New York State, which is \$56,951 (Chemung County Quick Facts).

### *Poverty & Public Assistance*

<b>Table 1 - County Population</b>		
<b>Location</b>	<b>2020</b>	<b>2022</b>
Town of Ashland	786	Not provided
Baldwin	793	---
Big Flats	7,579	---
Catlin	2,512	---
Chemung	2,426	---
Town of Elmira	6,644	---
Erin	1,851	---
Horseheads	18,733	---
Southport	9,051	---
Van Etten	629	---
Veteran	3,177	---
Village of Horseheads	Not provided	6,394
Millport	---	288
Village of Van Etten	---	629
Wellsburg	---	493
Elmira Heights	---	3,881
City of Elmira	---	25,852
Source: US Census Bureau		

In the state of New York, 2 million people (63%) live in poverty. The poverty rate for all families in Chemung County is 14.7%. The Child Poverty Rate for Chemung County was 21.6%. (The State of the Child in Chemung County). The rate for families with children under the age of five is 18.9%. (The State of the Child in Chemung County). In examining the rate of single mothers with children under the age of five, it is the largest segment of the population with a rate of 62.4%. Overall, the poverty rate for Chemung County is 14.7% in comparison to the national average of 12.8%. Significantly, the poverty rate for female householders with children under 5 continues to rise. Although the number of children has decreased, the need for support has increased for emergency food, supplies, clothing and shelter (EOP, Inc. Annual Report).

# New York State Community Action Association Report

Location: Economic Opportunity Program of Chemung and Schuyler Counties

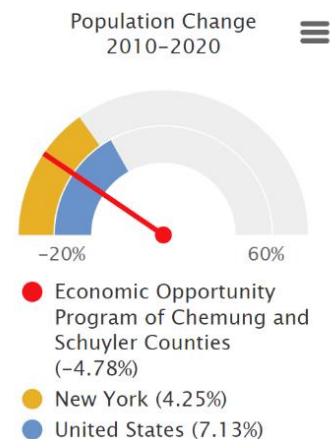
## POPULATION PROFILE

### Population Change

Population changes within the report area from 2010-2020 are shown below. During this ten-year period, total population estimates for the report area declined by -4.78 percent, decreasing from 107,173 persons in 2010 to 102,046 persons in 2020.

Report Area	Total Population 2010 Census	Total Population 2020 Census	Population Change 2010-2020 Census	% Change 2010-2020 Census
Report Location	107,173	102,046	-5,127	-4.78%
Chemung Co., NY	88,830	84,148	-4,682	-5.27%
Schuyler Co., NY	18,343	17,898	-445	-2.43%
New York	19,378,088	20,201,249	823,161	4.25%
United States	312,471,161	334,735,155	22,263,994	7.13%

Data Source: US Census Bureau, American Community Survey. 2018-22. Source geography: County



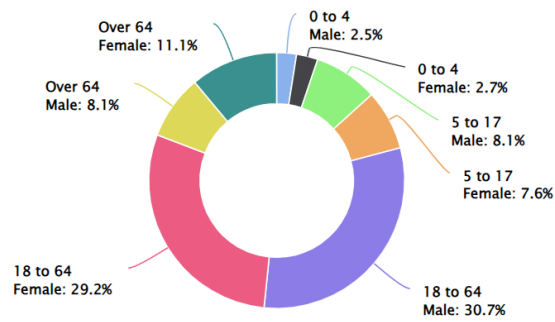
### Age and Gender Demographics

Population by gender within the report area is shown below. According to ACS 2018-2022 5-year population estimates for the report area, the female population comprised 50.55% of the report area, while the male population represented 49.45%.

Report Area	0-4 Male	0-4 Female	5-17 Male	5-17 Female	18-64 Male	18-64 Female	Over 64 Male	Over 64 Female
Report Location	2,508	2,714	8,133	7,599	30,833	29,337	8,169	11,098
Chemung Co., NY	2,092	2,272	6,846	6,379	25,436	24,183	6,478	9,046
Schuyler Co., NY	416	442	1,287	1,220	5,397	5,154	1,691	2,052
New York	573,150	548,722	1,541,547	1,465,024	6,188,724	6,274,928	1,322,027	1,924,419
United States	9,725,644	9,279,281	27,762,503	26,446,277	102,230,144	100,916,096	22,157,050	30,255,641

Data Source: US Census Bureau, American Community Survey. 2018-22. Source geography: County

Age and Gender Demographics  
Economic Opportunity Program of Chemung and Schuyler Counties



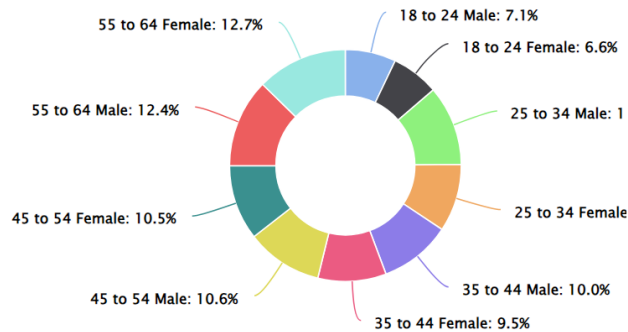
### Adult Ages (18-65)

Report Area	18-24 Male	18-24 Female	25-34 Male	25-34 Female	35-44 Male	35-44 Female	45-54 male	45-54 Female	55-64 Male	55-64 Female
Report Location	4,256	4,001	6,709	5,676	6,020	5,732	6,406	6,300	7,442	7,628
Chem. Co.	3,621	3,429	5,707	4,783	5,051	4,692	5,118	5,131	5,939	6,148
Schuy. Co.	635	572	1,002	893	969	1,040	1,288	1,169	1,503	1,480
New York	926,308	917,820	1,440,881	1,431,533	1,271,893	1,272,566	1,249,374	1,279,293	1,300,268	1,373,716
United States	16,019,697	15,263,199	23,107,964	22,280,189	21,636,615	21,173,744	20,593,598	20,493,759	20,872,270	21,705,205

Data Source: US Census Bureau, American Community Survey. 2018-22. Source geography: County

### Adult Ages (18 – 65)

Economic Opportunity Program of Chemung and Schuyler Counties

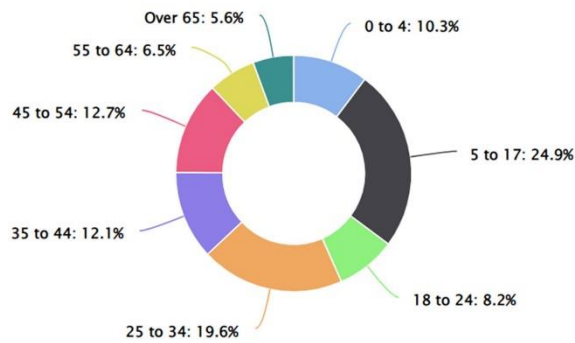


### Hispanic Ages (Male and Female Combined)

Report Area	0-4	5-17	18-24	25-34	35-44	45-54	55-64	Over 65
Report Location	332	799	264	631	390	409	210	179
Chemung Co. NY	313	730	195	626	318	355	172	165
Schuyler Co. NY	19	69	69	5	72	54	38	14
New York	287,685	74,039	410,715	613,133	560,911	490,373	393,995	398,510
United States	4,937,785	13,784,955	7,240,764	9,504,815	8,871,503	7,337,888	5,291,724	4,786,464

Data Source: US Census Bureau, American Community Survey. 2018-22. Source geography: County

Hispanic Ages (Male and Female Combined)  
Economic Opportunity Program of Chemung and Schuyler Counties



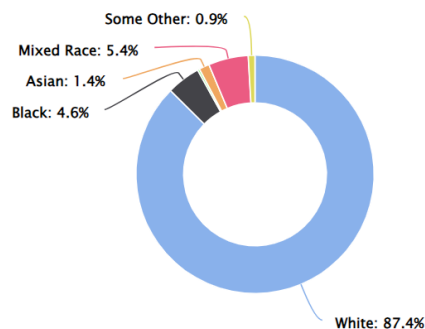
## Race Demographics

Population by gender within the report area is shown below. According to ACS 2018-2022 5 year population estimates, the white population comprised 87.42% of the report area, black population represented 4.57%, and other races combined were 2.6%. Persons identifying themselves as mixed race made up 5.41% of the population.

Report Area	Total Population	White Total	Black Total	American Indian Total	Asian Total	Native Hawaiian Total	Some Other Total	Mixed Race Total
Report Location	101,439	88,676	4,639	291	1,417	0	930	5,486
Chemung Co., NY	83,584	71,833	4,470	267	1,275	0	876	4,863
Schuyler Co., NY	17,855	16,843	169	24	142	0	54	623
New York	19,994,379	11,749,652	3,011,116	93,384	1,767,598	9,120	1,878,496	1,485,013
United States	331,097,593	218,123,424	41,288,572	2,786,431	19,112,979	624,863	20,018,544	29,142,780

Data Source: US Census Bureau, American Community Survey. 2018-22.

Race Demographics  
Economic Opportunity Program of Chemung and Schuyler Counties



## Race Demographics - Male

Report Area	White Male	Black Male	American Indian Male	Asian Total	Native Hawaiian Male	Some Other Male	Mixed Race Male
Report Location	43,500	3,016	201	694	0	629	2,651
Chemung Co., NY	34,937	2,912	195	621	0	587	2,452
Schuyler Co., NY	8,563	104	6	73	0	42	199
New York	5,798,028	1,410,498	47,377	851,286	4,419	937,384	732,294
United States	108,491,862	19,866,915	1,407,637	9,182,713	316,666	10,289,167	14,645,338

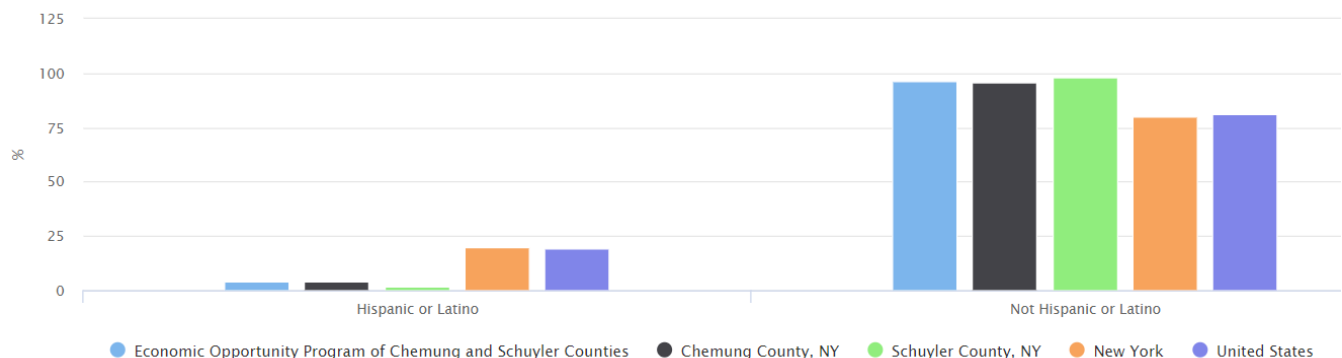
Data Source: US Census Bureau, American Community Survey. 2018-22.

## Ethnicity Demographics - Male

Report Area	Total Males Hispanic / Latino	Total Males Not Hispanic / Latino	Percent Males Hispanic / Latino	Percent Males Not Hispanic / Latino
Report Location	1,951	48,740	3.85%	96.15%
Chemung Co., NY	1,771	39,933	4.25%	95.75%
Schuyler Co., NY	180	8,807	2.00%	98.00%
New York	1,930,747	7,850,539	19.74%	80.26%
United States	31,330,296	132,870,002	19.08%	80.92%

Data Source: US Census Bureau, American Community Survey. 2018-22.

Ethnicity Demographics - Male



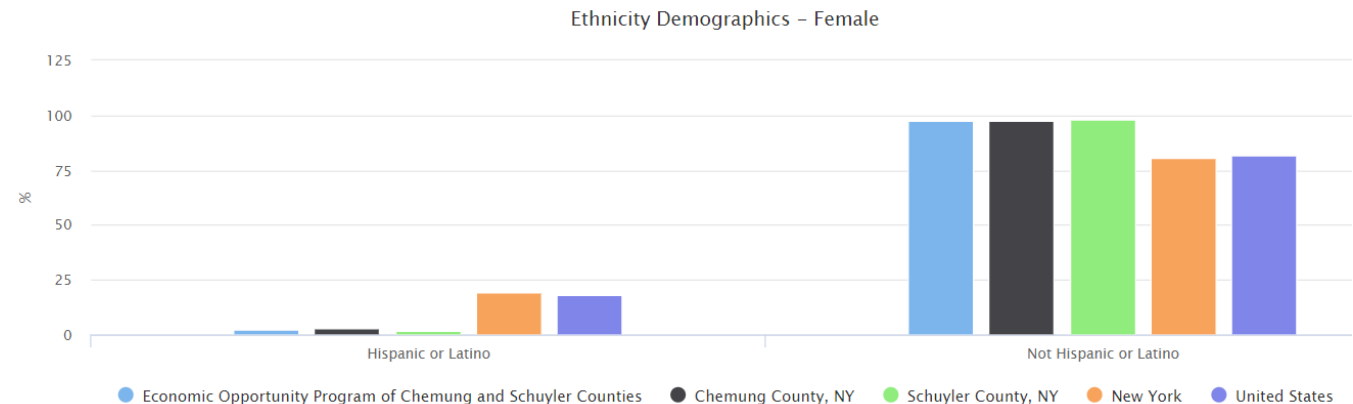
## Race Demographics - Female

Report Area	White Female	Black Female	American Indian Female	Asian Female	Native Hawaiian Female	Some Other Female	Mixed Race Female
Report Location	45,176	1,623	90	723	0	301	2,835
Chemung Co., NY	36,896	1,558	72	654	0	289	2,411
Schuyler Co., NY	8,280	65	18	69	0	12	424
New York	5,951,624	1,600,618	46,007	916,312	4,701	941,112	752,719
United States	109,631,562	21,421,657	1,378,794	9,930,266	308,197	9,729,377	14,497,442

## Ethnicity Demographics - Female

Report Area	Total Females Hispanic / Latino	Total Females Not Hispanic / Latino	Percent Females Hispanic / Latino	Percent Females Not Hispanic / Latino
Report Location	1,263	49,485	2.49%	97.51%
Chemung Co., NY	1,103	40,777	2.63%	97.37%
Schuyler Co., NY	160	8,708	1.80%	98.20%
New York	1,964,967	8,248,126	19.24%	80.76%
United States	30,425,570	136,471,725	18.23%	81.77%

Data Source: US Census Bureau, American Community Survey. 2018-22.



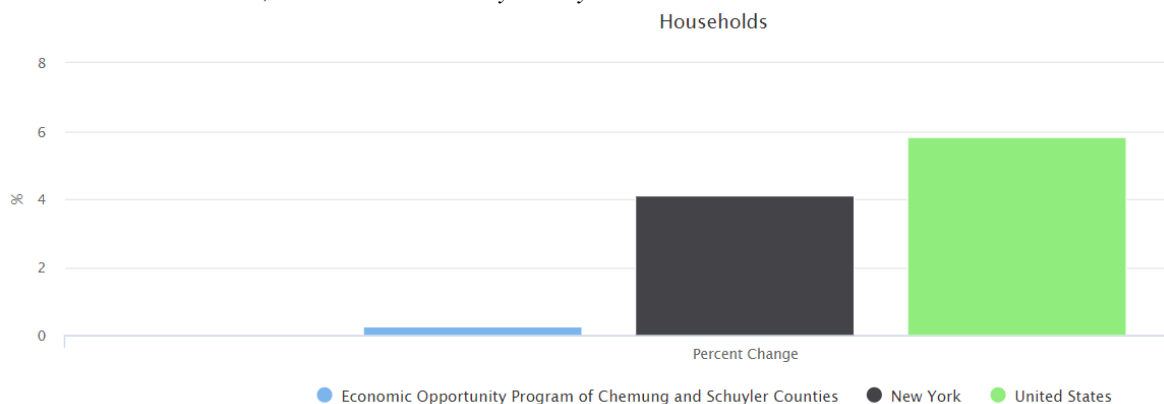
## Households

This indicator compares two separate American Community Survey (ACS) 5-year estimates to create a 5-year change in total households. The change in number of households within the report area are from 2013-2017 ACS, and 2018-2022 ACS. Total households for the report area increased by 117, or 0.28% in those areas reporting 2022 ACS 5-year data. This compares to a statewide increase of 4.13%.

Report Area	Total Households (2017)	Total Households (2022)	Change in Households	Percent Change
Report Location	42,108	42,225	117	0.28%
Chemung Co., NY	34,664	34,779	115	0.33%
Schuyler Co., NY	7,444	7,446	2	0.03%
New York	7,302,710	7,604,523	301,813	4.13%
United States	118,825,921	125,736,353	6,910,432	5.82%

Note: This indicator is compared to the state average.

Data Source: US Census Bureau, American Community Survey. 2018-22.



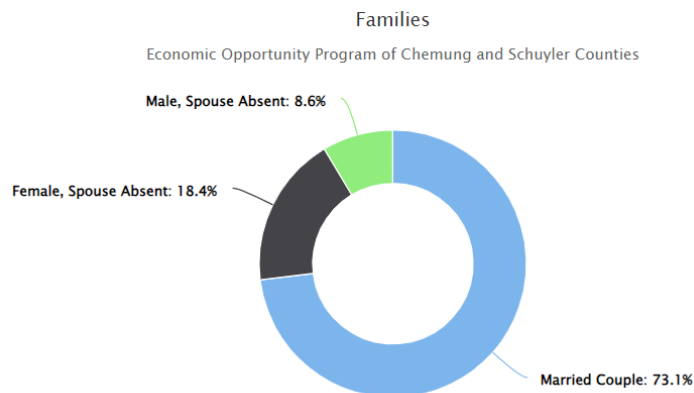
## Families



The American Community Survey (ACS) estimated there were 25,186 families in the report area in 2022. Married couple families comprised 73.08% of the total number. Families headed by men without wives comprised 8.56% of the total, while women without husbands headed 18.36% of families.

Report Area	Total Number of Families	Married Couple	Female, Spouse Absent	Male, Spouse Absent
Report Location	25,186	18,406	4,623	2,157
Chemung Co., NY	20,599	14,664	4,169	1,766
Schuyler Co., NY	4,587	3,742	454	391
New York	4,735,000	3,299,986	1,049,771	385,243
United States	81,432,908	59,760,581	15,373,720	6,298,607

Data Source: US Census Bureau, American Community Survey. 2018-22.



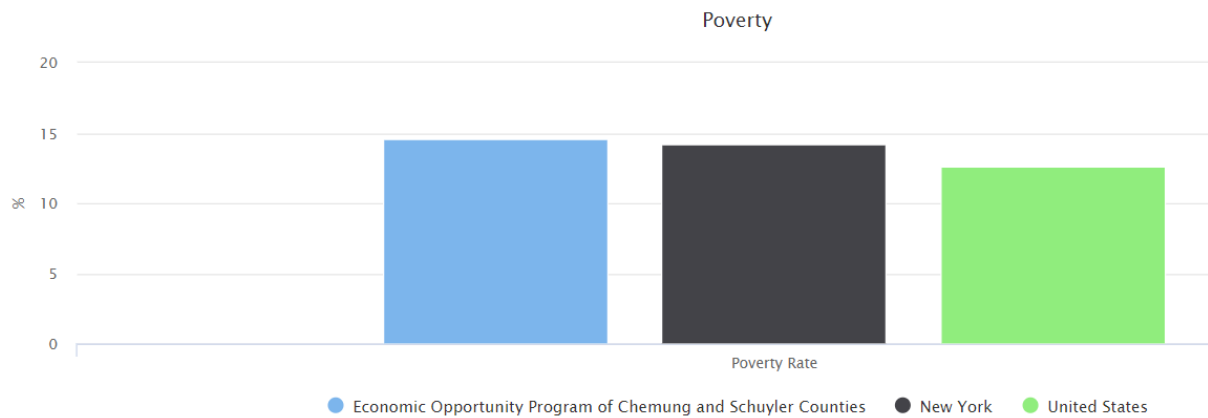
## Poverty

2022 poverty estimates show a total of 14,039 persons living below the poverty level in the report area. Poverty information is at 100% of the federal poverty income guidelines.

Report Area	All Ages No. of Persons	All Ages Poverty Rate	Age 0-17 No. of Persons	Age 0-17 Poverty Rate	Age 5-17 No. of Persons	Age 5-17 Poverty Rate
Report Location	14,039	14.61%	4,082	20.62%	2,836	19.22%
Chemung Co., NY	12,033	15.30%	3,505	21.10%	2,441	19.70%
Schuyler Co., NY	2,006	11.5%	577	18.10%	395	16.70%
New York	2,720,649	14.20%	725,064	18.60%	520,705	18.20%
United States	40,951,625	12.60%	11,582,950	16.30%	8,176,725	15.5%

Note: This indicator is compared to the state average.

Data Source: US Census Bureau, Small Area Income and Poverty Estimates. 2022.



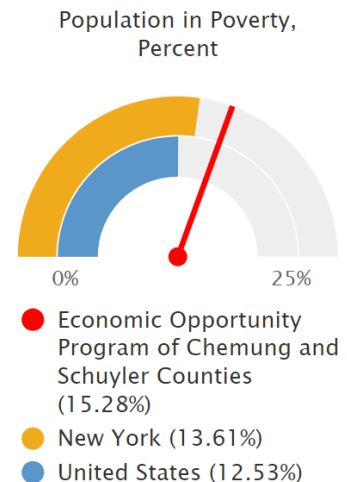
### Poverty Rate (ACS)

The following report section shows population estimates for all persons in poverty for the report area. According to the American Community Survey (ACS) 5 year estimates, an average of 15.28% of all persons lived in a state of poverty during the 2018 - 2022 period. The poverty rate for all persons living in the report area is less than the national average of 12.53%.

Report Area	Total Population	Population in Poverty	Population in Poverty, Percent
Report Location	97,492	14,899	15.28%
Chemung County, NY	79,840	12,118	15.18%
Schuyler County, NY	17,652	2,781	15.75%
New York	19,516,967	2,655,662	13.61%
United States	323,275,448	40,521,584	12.53%

*Note: This indicator is compared to the state average.*

*Data Source: US Census Bureau, American Community Survey. 2018-22.*



### Poverty Rate 200% (ACS)

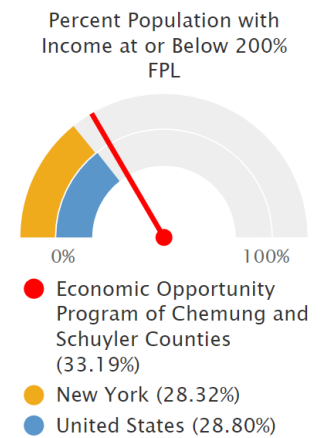
In the report area 33.19% or 32,359 individuals for whom poverty status is determined are living in households with income below 200% of the Federal Poverty Level (FPL). This indicator is relevant because poverty creates barriers to access including health services, healthy food, and other necessities that contribute to poor health status.

*Note: The total population measurements for poverty reports are lower than population totals for some other indicators, as poverty data collection does not include people in group quarters.*

Report Area	Total Population	Population with Income Below 200% FPL	Population with Income Below 200% FPL, Percent
Report Location	97,492	32,359	33.19%
Chemung County, NY	79,840	26,421	33.09%
Schuyler County, NY	17,652	5,938	33.64%
New York	19,516,967	5,527,984	28.32%
United States	323,275,448	93,118,710	28.80%

*Note: This indicator is compared to the state average.*

*Data Source: US Census Bureau, American Community Survey. 2018-22*



## EOP Top 3 Priorities Poll – 2022-2024

EOP Top 3 Priorities Poll	2024		2023		2022	
2022-2024	Avg Rank Priority		Avg Rank Priority		Avg Rank Priority	
Housing Security	2.19	1	2.23	1	2.49	3
Childcare & Youth Care	2.42	2	2.4	3	2.73	4
Access to Healthcare	2.53	3	2.67	4	2.41	2
Food Security	2.84	4	2.31	2	2.35	1
Triple Demic (Covid-RSV-Influenza)	4.49	5	4.46	5	4.18	5



## **Summary of Agency Survey Process and Results:**

As stated in our Agency Survey Process, evaluative information is gathered formally through surveys, virtual meetings, group discussions, phone calls and co-hosting of public meetings. Various technologies like zoom were utilized to conduct and update the community assessment process. Virtual surveys, focus groups, and polling of diverse stakeholders and participants was the result. Direct mail and social media supported increased numbers of stakeholder feedback and community-wide opportunities to gather feedback collaboratively and prioritize the strategic focus for 2022-2024. EOP participated in the **Chemung County Comprehensive Plan** from ideation to implementation. The Chemung County Commissioner met with Executives leaders in the Background Analysis Phases. EOP played a key role in the Community Outreach stages. The CEO will participate in an upcoming focus group of community/business leaders to help develop the plan recommendations. ideation and implementation stages. The data findings were included in the assessment process. Themes are consistent across surveys: Some surveys are distributed community-wide while others are program specific. Included in Survey Type Grid (Appendix I) is the type of survey used along with the number of respondents. Summaries of several survey groups are provided below.

### **Trends captured in the 2024- Chemung County Comprehensive Plan (Needs Assessment) Survey – Community Members- -EOP, Inc.@Ernie Davis Community Center-May 30, 2024, N=33**

EOP collaborated with the Chemung County Commissioner of Planning as participants in the development of a comprehensive plan and needs assessment. The CEO participated in initial planning and continues to be involved in stages of development. The Commissioner of Planning and staff along with the CEO, co-hosted a Chemung County Comprehensive Plan public workshop in conclusion of May Community Action Month 2024. A Comprehensive Plan establishes a community-based vision for the future and identifies priorities and strategies across inter-connected key opportunity areas such as land use, transportation, economic development, and sustainability. It guides future land use decision making and development with the needs and desires of the community at the forefront, identifies opportunities for grant funding, and informs future policy and budget decisions to align investments with the public's priorities. The general public, including EOP staff and participants were invited via social media, website marketing, flyers, and email to participate in public workshops which are ongoing. EOP played an essential role in the outreach efforts to engage and garner community participation. The data gathered and reported reflects consistency in community needs.

## Highlights from the Chemung County Comprehensive Plan Community Assessment Website

Announcements include:

- **Attend upcoming public workshops:**
  - **Public Meeting #1: May 30, 2024, from 6 - 8pm at the Ernie Davis Community @EOP located at 350 East 5th Street in the City of Elmira**
- Project Timeline:
  - Winter/Spring 2024 - Project Start-up and Background Analysis
  - Summer 2024 - Community Outreach and Visioning
  - Fall/Winter 2024 - Develop Plan Recommendations
  - Spring 2025 - Adoption Process
- Each group of 4-5 participants discussed four questions and wrote their answers on the posters:
  - What do you love about Chemung County?
  - What are the challenges currently facing the County?
  - What opportunity do you see for the County?
  - What are your top five priorities for the County?
- Themes from the responses to each of these questions are summarized below:

### What do you love about Chemung County?

- Parks and access to parks/nature (places to swim, fish, hunt, boat, hike, bike, etc.)
- Agriculture • Culture and history
- Location (central to NYS, close to other large urban areas)
- Sense of community
- Diversity 4
- Low cost of living
- Access to services/health facilities
- Educational facilities (BOCES, Elmira, ECC)
- Family-friendly/friendly for all ages
- Public transportation
- Small town feel with easy access to amenities

### What are the challenges currently facing the County?

- **Poverty, lack of high-quality jobs**
- Lack of property maintenance/zombie properties
- Aging infrastructure
- Crime/violence

- Vacancy
- Declining/aging population
- Insufficient public transportation limiting access to jobs
- Affordability of housing/homelessness, need for more housing options (multifamily)
- Public health and quality of healthcare providers
- Drug addiction
- Barriers to accessing services (income limits, awareness of programs, etc.)
- Need for more youth programming

What opportunities do you see for the County?

- Economic development (small/local businesses, light manufacturing)
- Education/workforce development (training programs for skilled jobs, expanding STEM program at ECC)
- Ecotourism/tourism
- Improve public transportation (extend hours, add routes, etc.)
- Increase childcare options (more weekend/evening availability)
- Pursue state/federal grants to alleviate poverty
- Redevelop vacant/underutilized sites like Arnot Mall and Southport Prison
- Increase number and diversity of retail stores/restaurants
- Market events/activities
- Improve access to/quality of healthcare

What are your top five priorities for the County?

- Affordable housing/housing security
- Food security
- Economic development, job creation, and expanding tax base
- Alleviating poverty
- Supporting/preserving agriculture, local food system
- Improving public health, access to healthcare for everyone (esp. mental health, drug treatment, etc.)
- Attracting and retaining young people and families, remote workers
- Improving public transportation
- Completing trail system
- Improving childcare and youth services
- Equity



- Documentation of each small group's written responses is provided below as a summary of each group's report out to the group:

**Group 1:** Group 1 highlighted what they love about Chemung County, including the parks, golf courses, and "beautiful river that runs through Chemung County." They appreciated the healthcare facilities and sense of community, noting "We have, like I said, all ages." For challenges, they mentioned funding, poverty, affordable housing, healthcare/dental access, mental health services, and "zombie properties." They emphasized the need for "intensive case managers." Opportunities they saw included economic development, tourism, "Federal funding for poverty" programs, and "Workforce investment and trades." They noted, "Everybody's not going to college... we want to be able to not just bridge those kids to college, but to a trade." **Their top 5 priorities were: 1) poverty, 2) health equity, 3) "affordable safe housing with case management", 4) economic development in small businesses, and 5) mental health, dental and drug treatment.**

**Group 2:** Group 2 loved Chemung County's "amazing rich history", "Easy access to places like stores", access to nature and parks, and diversity. Challenges they noted included access to medical/entitlement services, drug addiction, homelessness, gun violence, lack of youth activities, affordable housing, and transportation limitations impacting employment. They provided specific examples, such as when "Southern Tier Pediatrics pulled out and moved to Horseheads" creating healthcare access issues, and "We've had a lot of clients that... have had jobs up by the mall as wait staff and because of the buses stopped running in the evenings, they have no means to get back into town. So literally they've just quit their jobs." Opportunities included leveraging the "access to fresh water here. Something that we don't really think about very often," entitlement services, collaboration with higher education institutions, and employment/workforce development. Their top 5 priorities included improving "substance use and mental health services," noting they've found people "on a wait list for... just to be able to see a therapist for over a year."

**Group 3:** Group 3 appreciated the county's "nice manageable size Community", available programs, diversity, and family-oriented events. Challenges included lack of programs for aging adults, building accessibility issues ("We have some places where they have flights of stairs rather than... everything is on the first floor for them to get to"), need to engage youth ("a lot of times 6 they feel as though, They don't have a voice, they don't have any say"),

transportation limitations, and eligibility barriers for programs. Opportunities they saw included "incentives for hiring in between social status", "non-traditional childcare options and hours", skill training, more retail downtown, and expanded transportation. Their top 5 priorities were: 1) "Adequate transportation", 2) "Access to healthcare for everyone", 3) childcare and youth programs, 4) food security, and 5) housing security.

**Group 4:** Group 4 loved the lack of pollution/traffic, "short commutes" ("You don't have to travel. Literally anywhere, or you could get anywhere within 10 to 15 minutes"), low cost of living, family connections, open spaces, youth sports opportunities, and ice cream shops. Challenges included crime, job opportunities, public health issues, and the need for "Open, shared affordable office space". Opportunities they saw included job creation in manufacturing/tech, supporting entrepreneurs, marketing events/activities, diversifying transportation options, and "food trucks, permit locations". They suggested establishing "one space and have multiple trucks there on a regular basis that's Central to a lot of the businesses." Their top 5 priorities included "Job creation in the city close to housing", expanding the tax base with diverse businesses, developing existing assets, youth/family retention, and creating safe spaces for youth activities.

**Group 5:** Group 5 appreciated the hills/countryside, river system, "central location in New York State" ("the Gateway of the Northeast"), highway access, and educational opportunities like BOCES. Challenges included homelessness, low-paying jobs ("Yes, we have our teachers. Yes, we have our nurses, but the high paying jobs that exist Health Care wise... Your travel nurses. They come, they go. They don't, they don't stay"), high taxes, poor communication about events, aging housing stock, and lack of adult training programs. Opportunities included expanding public transit, "Finding our identity" as a county and becoming "a welcoming place a place that people after you've traveled... want to go?", equalizing property assessments, and incubating creative spaces for talented locals. Their top 5 priorities included "equalizing the assessments both for undervalued places and then overvalue places", addressing poverty, supporting local businesses, providing health/wellness resources, improving transportation, and addressing crime.

**Group 6:** Group 6 loved the "Outdoor opportunities fishing on a smoking. Fighting vote voting... and bicycling", proximity to urban areas, historic housing stock, airport, and

arts/cultural attractions. Challenges included declining/aging population, "decreasing state investment and 7 infrastructure", inflation, and need for after-school programs. Opportunities included redeveloping housing stock, promoting locally-owned shops, "Ecotourism kayaking and bicycling", leveraging college connections, and "Redevelop solar prison site for something new". Their top 5 priorities were attracting/retaining young people, "Complete the trail system, north and south from east to west across town", increasing youth mentorship in arts/culture, developing sustainable agriculture, and "Draw new work from home residents" by leveraging the upcoming "full grown, fiber network".

## CHEMUNG COUNTY COMPREHENSIVE PLAN



### Key Findings from the Inventory Process

#### Land Use:

- Predominantly agricultural
- Highest population densities in City of Elmira and Horseheads

#### Parks and Open Space:

- 80 recreation areas, Concentrated in the eastern portion of the County

#### Agriculture:

- 352 Farms, mostly mid-sized
- Number of farms and total acreage decreasing between 2002-2022

#### Natural and Scenic Resources:

- 64% of soils are considered suitable for farming
- History of flooding around the Chemung River

#### Education and community facilities:

- 9 School districts serving ~10,000 students
- 42 Municipal Departments

#### Municipal Comprehensive Plans:

- 7 municipalities with completed Comprehensive Plans

#### Demographics:

- Population is aging and decreasing
- Diversity among residents is increasing

Figure: Floodplains in Chemung County

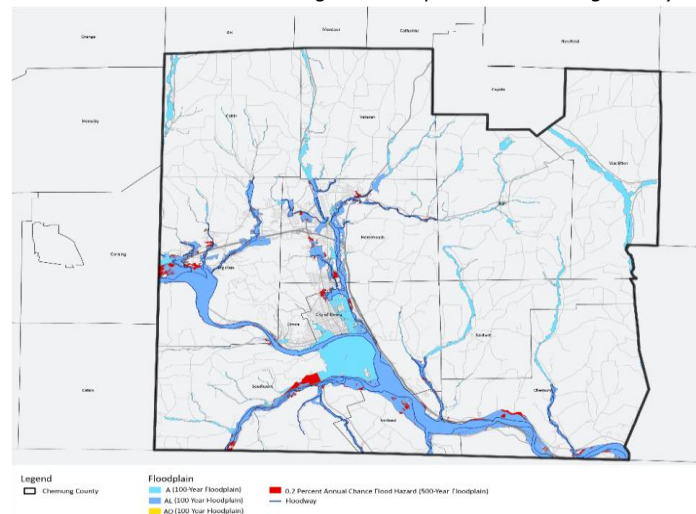
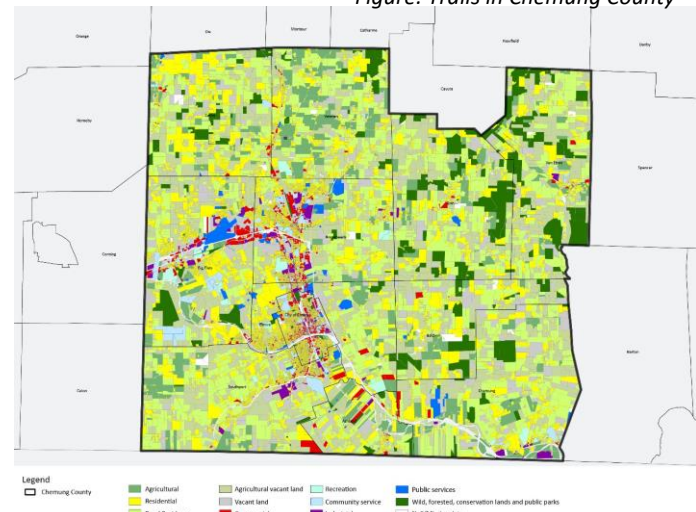


Figure: Trails in Chemung County



### Housing:

- Excess vacancy and pent-up housing demand
- Despite affordability, residents face high costs

### Economy:

- Unemployment below NYS average

### Mobility:

- +250 bridges, 82% are in fair condition

### Environmental Resiliency:

- Multiple County initiatives to increase resiliency

### Utilities Infrastructure:

- Broadband Internet access improving in rural communities
- 80% of residents served by public water
- 54% of residents served by sewer

### Public Health:

- Lead exposure and environmental remediation sites prevalent

### Cultural Resources

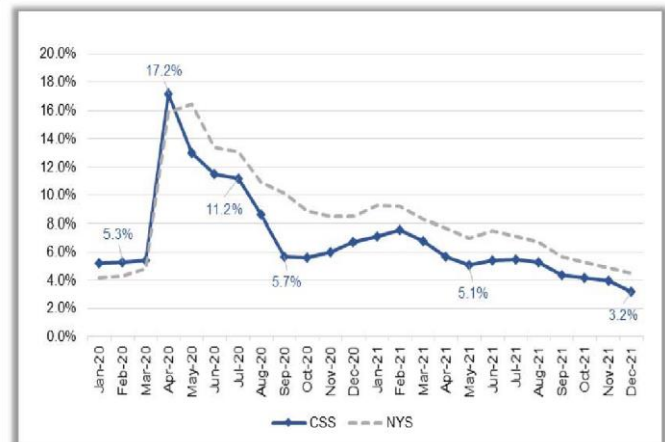
- 48 National Register listed buildings, 18 districts, and 176 eligible buildings

More than 50 community stakeholders attended and provided key focus group input to on the needs and issues impacting Chemung Co., residents, and social service programs.

Additionally, EOP's Juneteenth Festival June 2024 provided an outreach opportunity to capture N=90 more surveys from community members. Public Meeting #2 was attended by the CEO to review updates and next steps on September 17, 2024, from 5-7pm at the Arnot Event Center located at 3300 Chambers Road South, Horseheads Alternatively attend via Zoom.

The CEO was invited to participate in a focus group of community business leaders.

Figure: Unemployment Rates in Chemung-Schuyler-Steuben Counties & New York State



## Birth to Five School Readiness Program End of Program Year Survey

2022-2023

56 Responses

05:32 Average time to complete

Active Status

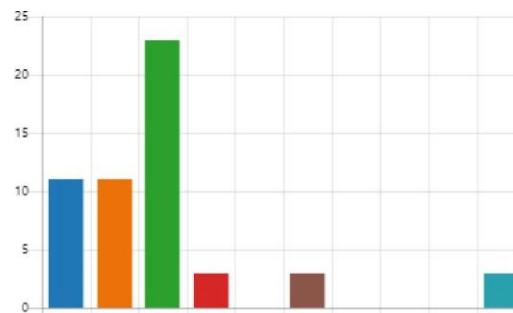
### 1. What Birth to Five School Readiness Program site was your child enrolled in?

- ☐ Broad Street 20
- ☐ A'Don Allen 7
- ☐ Ernie Davis Family Center 13
- ☐ ABLE 2 8
- ☐ Libertad 8



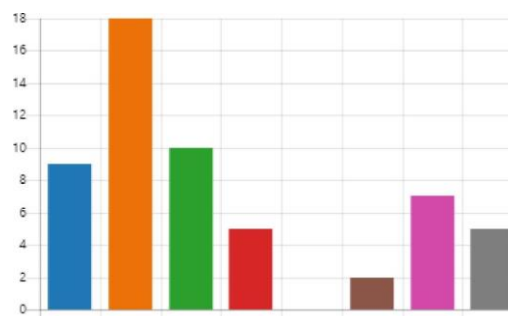
### 2. What zip code is your home located in?

- ☐ 14845 11
- ☐ 14904 11
- ☐ 14901 23
- ☐ 14905 3
- ☐ 14892
- ☐ 14903 3
- ☐ 14859 0
- ☐ 14902 0
- ☐ 14871 0
- ☐ Other 3



### 3. Did the Birth to Five School Readiness Program help you in any of the following areas?

- ☐ Referrals 9
- ☐ Resources 18
- ☐ Workshops/Education 10
- ☐ Food Insecurities 5
- ☐ Housing
- ☐ Transportation 2
- ☐ Parenting Education 7
- ☐ Other 5



4. What other services in our community should the Birth to Five School Readiness Program collaborate with in order to better serve your family? i.e., addiction services, family court, housing, etc. 48 Responses - Latest Responses:

- "no answer given"
- "Domestic Violence could help some families. Family Court."
- "no answer given"

5. What are the areas in need of improvement for the Birth to Five School Readiness Program?

53 Responses - Latest Responses:

- "no answer given"
- "n/a"
- "no answer given"

6. What is the most significant goal your family has achieved this year?

54 Responses - Latest Responses:

- "no answer given"
- "Preparing for kindergarten "
- "Getting a three-bedroom apartment"

7. What is the biggest challenge your family has faced this year?

52 Responses - Latest Responses:

- " Transportation "
- "n/a"
- "no answer given"

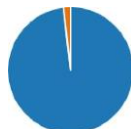
8. Has the Birth to Five School Readiness Program increased your child's school readiness?

- No 54
- Unsure 2



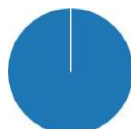
9. Did the Birth to Five School Readiness Program help you meet the needs of your family?

- No 54



10. Would you recommend or refer the Birth to Five School Readiness Program to others?

- Yes 56
- No 0



11 If you answered no to question # 10, please explain in the comment box below.

56 Responses - Latest Response:

- "no answer given"
- "n/a"
- "n/a"

12 What Birth to Five School Readiness Program was your Family enrolled in?

- Early Head Start 25
- Head Start 31



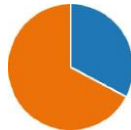
13 In what ways were you able to volunteer for the Birth to Five School Readiness Program

52 Responses - Latest Response:

- "no answer given"
- "I could not volunteer :
- "no answer given"

14 Were you able to attend the Parent Gathering meetings on zoom?

- Yes 18
- No 37



15 Did you like the Zoom format? 49 Responses - Latest Response:

- 'Yes "
- "no answer given I

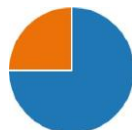
16 In what ways could we improve the Parent Gathering meetings?

47 Responses - Latest Responses:

- "no answer given"
- "no answer given"
- "no answer given"

17. Would you be interested in a summer program if offered?

- Yes 42
- No 14





18. Are you satisfied with the amount of information that you receive about your child's progress in the program?

- Yes 53
- No 3



19. Did you find using my Teaching Strategies easy?

- Yes 42
- No 12



20. If you answered no to question 20, please explain in detail. 44 Responses - Latest Responses:

- "no answer given"
- "n/a"
- "no answer given"

21. This area is for any additional comments ( i.e. negative or positive) about your Birth to Five School Readiness Program experience. 46 Responses - Latest Responses:

- "no answer given"
- "Teachers and staff are very helpful and caring for each child/parent. "
- "My daughter Kay'Lanah loves her teachers, for that I will forever be t...

## Birth to Five School Readiness Program End of Program Year Survey 2021-2022

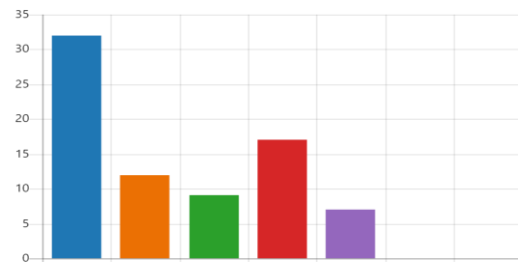
78 Responses

04:18 Average time to complete

Active Status

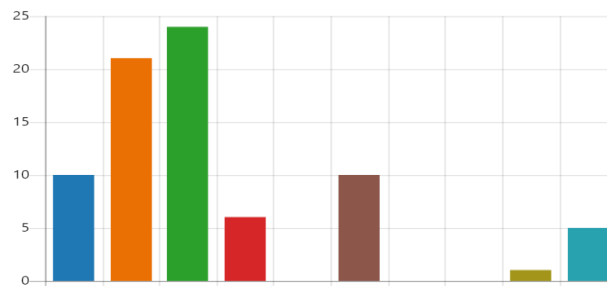
### 1. What Birth to Five School Readiness Program was your child enrolled in

- ☐ Broad Street 32
- ☐ A'Don Allen 12
- ☐ Ernie Davis Family Center 9
- ☐ ABLE 2 17
- ☐ Libertad 7
- ☐ Home-based 0
- ☐ Expectant mothers 0



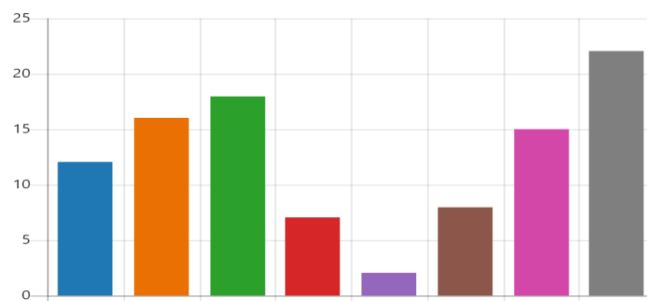
### 2. What zip code is your home located in?

- ☐ 14845 10
- ☐ 14904 21
- ☐ 14901 24
- ☐ 14905 6
- ☐ 14892 0
- ☐ 14903 10
- ☐ 14859 0
- ☐ 14902 0
- ☐ 14871 1
- ☐ Other 5



### 3. Did Birth to Five School Readiness Program help you in any of the following areas?

- ☐ Referrals 12
- ☐ Resources 16
- ☐ Workshops/Education 18
- ☐ Food Insecurities 7
- ☐ Housing 2
- ☐ Transportation 8
- ☐ Parenting Education 15
- ☐ Other 22



4. What other services in our community should Birth to Five School Readiness Program collaborate with in order to better serve family? i.e., addiction services, family court, housing, etc. 55 Responses - Latest Responses:

- "no answer given"
- "n/a"

5. What are the areas in need of improvement for the Birth to Five School Readiness Program? 61 Responses - Latest Responses:

- "no answer given"
- "n/a"

6. What is the most significant goal your family has achieved this year? 63 Responses - Latest Responses

- "Kindergarten readiness"
- "got new car"

7. What is the biggest challenge your family has faced this year? 58 Responses - Latest Responses:

- "no answer given"
- "none"

8. Has the Birth to Five School Readiness Program increased your child's school readiness?
- Yes 65
  - No 6
  - Unsure 5



9. Did the Birth to Five School Readiness Program help you meet the needs of your family?
- Yes 70
  - No 7



10. Would you recommend or refer the Birth to Five School Readiness Program?
- Yes 65
  - No 8
  - Maybe 5



11. What Birth to Five School Readiness Program was your Family enrolled in"

- Center-based 72
- Home-based 1
- Both 3



12. In what ways were you able to volunteer for Birth to Five School Readiness Program

57 Responses - Latest Responses:

- "no answer given"
- "n/a"

13. Were you able to attend the Parent Gathering meetings at your center?

- Yes 16
- No 60



14. In what ways could we improve the Parent Gathering meetings?

50 Responses - Latest Responses:

- "no answer given"

15. Would you be interested in a summer program if offered?

- Yes 57
- No 19



16. If you are interested in the summer program if offered, which would you prefer?

- 2 hours 4 4
- Full day 57



17. If you are not interested in a summer program, what are the barriers that might keep you from participating? 44 Responses - Latest Responses:

- "no answer given"
- "Just not interested in summer program"

18. This area is for any additional comments,( i.e. negative or positive) about your Birth to Five School Readiness Program experience, 43 Responses - Latest Responses:

- "no answer given"

At the Annual Meeting in 2022-2024, stakeholders were surveyed and asked to rank the **Top 3 Priorities for EOP** in order for the agency to more effectively serve the needs of the community.

Below are the results:

<b>Economic Opportunity Program, Inc. Annual Meeting, Board of Directors and Stakeholder</b> <b>Virtual Polling- 2022-2024</b>
---

EOP Top 3 Priorities Poll 2022-2024	2024		2023		2022	
	Avg Rank	Priority	Avg Rank	Priority	Avg Rank	Priority
Housing Security	2.19	1	2.23	1	2.49	3
Childcare & Youth Care	2.42	2	2.67	3	2.73	4
Access to Healthcare	2.53		2.31		2.41	
Food Security	2.84	3	4.46	4	2.35	2
Triple Demic (COVID -RSV-Influenza)	4.49	4		2	4.18	1
		5		5		5

## Observations

- **Housing Security** technically increased in importance over last year with a larger gap to the 2<sup>nd</sup> priority from the previous year. It remains a top priority two years in a row and is the only top 3 priority all three years.
- **Childcare & Youth Care** have moved up the priority of importance each year.
- Based on some comments this year, Healthcare could possibly include mental care and dental care.
- **Food Security** has dropped each year. I would suggest that the various EOP programs are at least influencing this priority.

## Trend Comments captured in the 2024 EOP Virtual Surveys, N = 105

### Please Share Any Comments or Suggestions:

A calendar of events including youth programs would be helpful to choose utilizing your programs

Another important area is helping people to prepare for and secure jobs and career growth. Success in this area helps solve the concerns in the other categories.

I also want to commend the great work being done for English language develop(ed) by Stephanie and all the others who work in this program. Thanks for all you do!

Dental! No one can afford to get their teeth fixed! Maybe have an FQHC come in once a week?

Drug prevention in youth would be great! Drugs are such a huge problem in our area, so addressing it with youth early on would be so powerful.

EOP is the heart of the Elmira community. The impact of services are far-reaching but lesser known outside of Elmira.  
Invest in Marketing to make sure the impact to the broader region is credited.  
Thank you to the dedicated staff and volunteers!

Have a hard time having enough food for four people on 465.00 a month SNAP benefits.

I believe they all should be a top priority and not labeled 1-5. They are all very important.

I need new windows but because I live in a mobile home they won't help...that's not fair!

I'm currently homeless, the motel program is at times worse than hiding out in the woods alone then in a room where you can be trapped and no one hear u scream for help cause the motel

Program is full of violence and drugs, I am a recovering addict, I have safety issues that lead to bad anxiety from a past trauma ten years ago., I am also battling to get mental health treatment, and I struggle to find resources and I also find that people are quick to judge and make people feel bad when they are at their lowest already.

I believe there needs to be better case management to help people who have mental illness and are homeless cause the depression and hopeless feelings can be so overpowering that you start to feel like there is nothing to help or no one who cares, and that can be a deadly situation for some people.

Mental health care.

More things for our kids to do then be in tv and phones... bring back things for kids to do.. step team dance bball for all ages not just certain ages start them young!!!

Much more needs to be done in our community to meet the needs of Senior Citizens. Transportation, many more activities for them, opportunities for them to get out and mingle with each other, as well as health care support and Food security. We have spent many years in this state meeting the needs of our early childhood population while some of our senior citizens are sitting home with no connection with the outside world. We also need to find a way to make them aware of these opportunities when we have them. They should be available to all socio-economic levels and at a nominal fee if at all.

Maybe these could happen through grants.
<p>There are too many in our community who can't work because they don't have access to affordable child care. What they would pay out would eliminate what they'd make in pay (and in some cases more than their pay). Housing stock continues to be of concern, with absentee or slumlords outright refusing to do necessary repairs to make spaces livable and tenants afraid to call code enforcement in fear of eviction or condemnation of the property.</p> <p>Healthcare can be accessed, per se, but health literacy is extremely poor in this area, even among those who have higher education and the medical professionals don't take time to explain things in ways citizens can understand. We are not experiencing more positive health outcomes though the system has been making targeted, billion-dollar efforts to do so for more than ten years.</p>
There is no equal opportunity in this country. If you aren't white you aren't right. The money controls everything.
These teachers are beyond overwhelmed, my child needs more attention and told directions to him and a smaller group of peers. It seems as if it's a jungle walking in and out of that broken door. The teachers make do with what they have and I commend them for that.
Work on getting computers installed for students and parents. Get a virtual server and terminals is cost effective.
Worth no affordable housing available no other goals can be met.



# **Appendices**

## **Appendix I:**

### **AGENCY SURVEY PROCESS**

As a part of our Needs Assessment/Satisfaction Survey for EOP, surveys are distributed for the purpose of understanding participant needs throughout the community and gaps in services.

- Each division is required to distribute surveys for their specific programs and services in which to analyze the effectiveness. (Surveys including Participants, Community Members and Board Members)
- The programs will utilize the surveys to gather the information to determine if there needs to be revision, expansion or new programming.
- Each division should have a goal of at least a 30-50% return to analyze the information.
- Once the information is compiled, a written result will be completed as additional information for the Needs Assessment that is conducted every three years.
- In addition to surveys, focus groups, small group meetings, and interviews are part of EOP's ongoing process of data collection to obtain essential and meaningful information for our Needs Assessment process.

## Appendix I con't--SURVEY TYPE GRID

Survey Type	Population Served	# Respon- dents	Date	Totals	Grand Total
- EOP Forms Survey	- B25 Head Start Parents - B25 Head Start Parents	N=56 N=78	20232022	N=56 N=78	<b>N=134</b>
- Chemung County Comprehensive Planning Public Hearing-Focus Group	- Chemung County Community Member(s) - EOP, Inc. Staff - Human Service Partners - Faith Partners - EOP, Inc. Board members - B25 Policy Council Member	N=33	May 2024	N=33	<b>N=33</b>
- EOP Annual Needs Assessment /Top # Priorities - Virtual Survey	- Chemung/Schuyler Counties - Targeted service markets	N=135  N=302  N=105 Views— 1,106; 100% Completion Rate	Feb. 2022Feb 2023Feb 2024-May 2024	N=135  N=302  N=105	<b>N=542</b>
- EOP Annual Meeting Update and Feedback Session	- Community Stakeholders - Board Members - B25 Policy Council Members - EOP, Inc. Staff - Corporate Business Sponsors	N=20	Feb. 2024	N=20	<b>N=20</b>
- Chemung County Planning Outreach Events	- *EOP Juneteenth Community Attendees - *Chemung County Residents	N=90	June 2024	N=90	<b>N=90</b>
<b>TOTAL</b>				<b>All Surveys Combined N= 819</b>	

## Appendix II. EOP, Inc. Annual Scorecard of Outcomes/Results:





A promotional poster for a 'FREE COMMUNITY HEALTH FAIR'. The poster has a teal background with a white central area framed by an orange border. Yellow starburst graphics are scattered around the border. On the left side, there is an illustration of a clipboard with a blue plus sign. On the right side, there is a pink heart with a white ECG line and a stethoscope illustration. The text is arranged as follows: 'FREE COMMUNITY HEALTH FAIR' in large, bold, orange letters; 'Receive information on:' in dark brown; a list of topics (Vital Signs, Heart Health, Diet + exercise, Mental Wellness) in orange; 'And more!' in dark brown; the date and time 'APRIL 18TH 9AM - 12:30 PM' in pink; the location '650 BALDWIN ST ELMIRA, NY 14901' in pink; the LECOM logo (Lake Erie College of Osteopathic Medicine) in black; the Economic Opportunity Program, Inc. logo (a green geometric pattern) and name in black, with the tagline 'Strengthening the fabric of our community' in a smaller font; and 'SEE YOU THERE!' in large, bold, yellow letters at the bottom.

**FREE COMMUNITY HEALTH FAIR**

**Receive information on:**

- Vital Signs
- Heart Health
- Diet + exercise
- Mental Wellness

**And more!**

**APRIL 18TH  
9AM - 12:30 PM**

**650 BALDWIN ST  
ELMIRA, NY 14901**

**LECOM**  
LAKE ERIE COLLEGE OF OSTEOPATHIC MEDICINE

 **Economic Opportunity Program, Inc.**  
*Strengthening the fabric of our community*

**SEE YOU THERE!**

## Appendix IV. Access to Health Care Partnerships:





**Community Health Clinic**  
**Will be Open**  
**5 PM to 7 PM**  
**the First Thursday**  
**of Every Month**  
**and 2 PM to 4PM**  
**on All Other Thursdays**  
*Still Offering Blood Pressure Tests*  
*And Lead Screenings.*  
**Still Free!**

**Ernie Davis Family Center**  
**650 Baldwin Street**  
**Elmira, NY 14901**  
**(607) 734-6208 ext. 277**

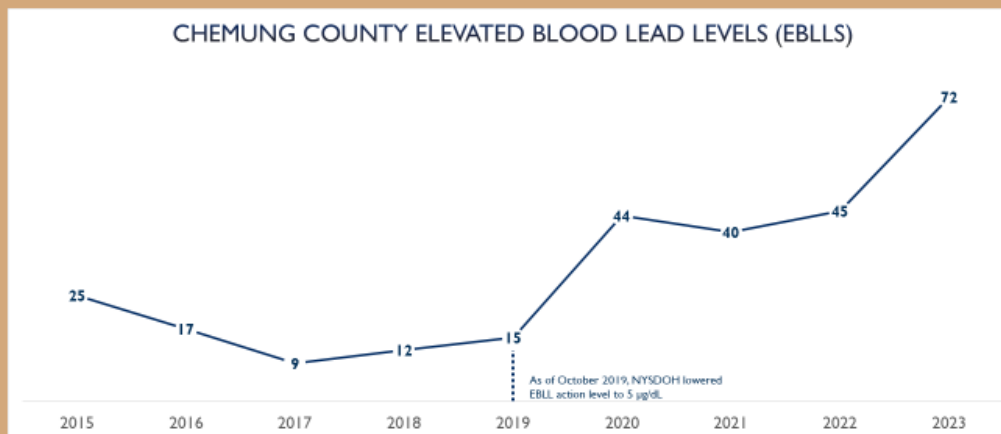
Underwritten by:








## CHEMUNG COUNTY LEAD POISONING PREVENTION PROGRAM ADMISSIONS BY YEAR







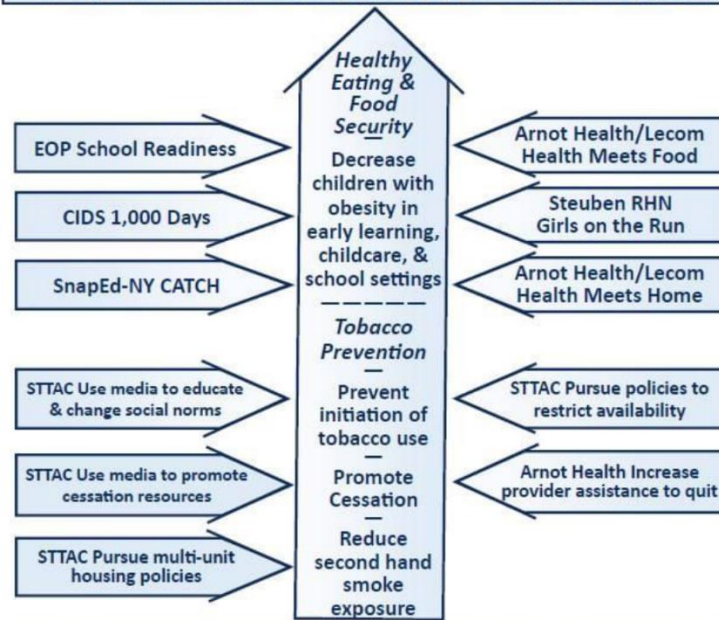
## Chemung County Health Department

3m · 🌐

The 2022 - 2024 Community Health Assessment (CHA) and Community Health Improvement Plan (CHIP) is on... See more

### CHEMUNG COUNTY Community Health Improvement Plan

#### PREVENT CHRONIC DISEASE



Health Priorities Partners & others may play a role in implementing these strategies



Home



Watch



Marketplace



Dating




Notifications



Menu

## Appendix V. Food Security Partnerships:



### SNAP-Ed New York- Southern Finger Lakes Region

## Fruit & Vegetable Prescription Program (FVRx)

The FVRx program provides free nutrition education and produce to individuals that are referred by a healthcare provider. Patients that face food insecurity and have or are at risk of developing a diet-affected chronic illness greatly benefit from this program!


Once enrolled, classes are provided weekly for 6 weeks. After attending each session, individuals receive \$20 in vouchers to redeem for fresh produce at participating produce retailers (totaling \$120 in fruits and vegetables at no cost to the patient!).

**Topics covered in the nutrition classes include:**

- How to prepare recipes using in-season fruits and vegetables
- Alternatives to salt and how to reduce sodium
- Healthy swaps while eating out
- Eating healthy on a budget
- Healthy fats vs unhealthy fats
- Importance of physical activity and ways to weave it into the routine

**Vendor Partners:** East Side Farmers Market | Elmira      Save A Lot | Elmira  
Tops Friendly Markets | Bath, Penn Yan, Elmira      Muddy Fingers Farm | Elmira  
Dave's Produce | Bath      Indian Pines | Penn Yan      The Windmill | Penn Yan

Interested in partnering to refer patients?  
Contact Kelsey at [kem337@cornell.edu](mailto:kem337@cornell.edu) or  
(607) 664-2303!



SNAP-Ed is funded by USDA's Supplemental Nutrition Assistance Program or SNAP. This institution is an equal opportunity provider.

## SNAP-ED PARTNERSHIP EXPANSION



### MY PLATE FOR MY FAMILY

Join SNAP-Ed for a free workshop

- WAYS TO PLAN AND SAVE ON HEALTHY MEALS THROUGHOUT THE WEEK
- SHOP FOR LOW-COST FOODS FROM ALL THE FOOD GROUPS
- IDENTIFY WAYS TO ENCOURAGE CHILDREN TO EAT HEALTHIER AND BE MORE ACTIVE

**March 30th, 2023 | 3:00PM to 4:00PM**  
**ACCEL Community Clinic**  
650 Baldwin St. Elmira

Contact Elizabeth Derr at [ederr@cseop.org](mailto:ederr@cseop.org) or  
(607) 734-6174 Ext. 277 to register!

SNAP-Ed is funded by USDA's Supplemental Nutrition Assistance Program or SNAP. This institution is an equal opportunity provider. Cornell Cooperative Extension is an employer and educator recognized for valuing AA/EEO, Protected Veterans, and individuals with disabilities and provides equal program and employment opportunities.

## SNAP-ED NUTRITION PARTNERS





## FREE WORKSHOP EATING HEALTHY ON A BUDGET

62% of shoppers say it costs too much to eat healthy food!  
Learn tips and tricks for making affordable choices



June 20, 2024  
3pm-4pm  
during the ACCEL Clinic  
at EOP Inc.  
650 Baldwin St. Elmira  
NY, 14901

## QUESTIONS?

call Alison 607-734-4453  
ext. 217  
or email

[aak244@cornell.edu](mailto:aak244@cornell.edu)

If modifications are needed, please  
notify in advance

Visit [www.snapedny.org](http://www.snapedny.org) for additional tips, recipes, and more!

SNAP-Ed is funded by USDA's Supplemental Nutrition Assistance Program or SNAP. This institution is an equal opportunity provider.  
Cornell Cooperative Extension is an employer and educator recognized for valuing AA/EEO, protected veterans, and individuals with disabilities and provides equal program and employment opportunities.



**Economic  
Opportunity  
Program, Inc.**  
*Strengthening the fabric of our community*

## **Back to School Giveaway Events**

**MEALS, SCHOOL SUPPLIES, BACKPACKS & MORE**

**10:00 am - 2:00 pm (until gone)**

**August 7th & August 26th**



**At The  
Ernie Davis Community Center  
650 Baldwin Street  
Elmira, NY 14901**

Must be income eligible.

Please bring proof of income.

(paystubs, taxes, HEAP or SNAP award letters)

<u>Family Size</u>	<u>Monthly Income</u>
1	\$2,430 or below
2	\$3,287 or below
3	\$4,143 or below
4	\$5,000 or below
5	\$5,857 or below
6	\$6,713 or below
7	\$7,570 or below
8	\$8,427 or below

\* Add \$857 for each additional person



**PRE-REGISTRATION  
NOT REQUIRED BUT  
STRONGLY ENCOURAGED**  
Visit <https://bit.ly/EOP-BTS>  
to register  
or scan:





# Back to School Giveaway Events



**MEALS, SCHOOL SUPPLIES, BACKPACKS & MORE**

**9:30 am–11:30 am (until gone) & 1 pm–3 pm (until gone)**

**JULY 30, 2024, & AUGUST 22, 2024**



**At Schuyler County  
Human Services Building  
323 Owego Street  
Montour Falls, NY**

Must be income eligible.

Please bring proof of income.

(paystubs, taxes, HEAP or SNAP award letters)

<u>Family Size</u>	<u>Monthly Income</u>
1	\$2,430 or below
2	\$3,287 or below
3	\$4,143 or below
4	\$5,000 or below
5	\$5,857 or below
6	\$6,713 or below
7	\$7,570 or below
8	\$8,427 or below

\* Add \$857 for each additional person



**PRE-REGISTRATION  
NOT REQUIRED BUT  
STRONGLY ENCOURAGED**  
Visit <https://bit.ly/EOP-BTS>  
to register  
or scan:

